



Bobcat[®]

One Tough Animal[®]

SKID-STEER LOADERS

S450 | S510 | S530 | S550
S590 | S630 | S650

M-Series

🌐 Europe



INTRODUCTION

ONE TOUGH ANIMAL



▶ BOBCAT'S HISTORY

In 1958, the Melroe Manufacturing Company introduced a compact front-end loader that quickly evolved into the M400, the world's first true skid steer loader. The company soon adopted what became the world-famous 'Bobcat' brand – and its success paved the way for the global compact equipment industry we now know.

▶ INNOVATION CENTER IN DOBŘÍŠ

Today, Bobcat's EMEA headquarters in Dobříš, Czech Republic, serves as a hub for innovation. Here, a manufacturing plant produces around 25 000 machines annually for EMEA customers and global export. The site is also home to the Bobcat Innovation Centre, where rigorous testing and product development take place using advanced facilities like climate and anechoic chambers.



▶ BOBCAT TODAY

With over 60 years of manufacturing experience and a commitment to ongoing innovation, Bobcat has delivered millions of machines to the market. Known for their high performance, reliability, and unparalleled comfort, the diverse lineup caters to a wide variety of applications. Whether it's landscaping, snow removal, construction, demolition, or roadwork, Bobcat machines empower users to accomplish more.



▶ OUR MISSION

We empower operators to accomplish more, while working in the toughest conditions and tightest situations. When our customers have the will, we provide the way.

MADE TO KEEP YOU IN THE FIELD

► BOBCAT EQUIPMENT EARNS ITS KEEP

Bobcat equipment is tough – and this attribute leads all of the others. Front-to-back uptime protection features, panoramic serviceability and simple maintenance ensure that M-Series loaders stay reliable year after year.



► SUPERIOR POWER IN A COMPACT PACKAGE

A best-in-class mix of performance and agility for maximum productivity. P. 7



► EASY MAINTENANCE

Bobcat knows your job is tough and makes sure servicing your loader isn't. P. 10



► MAXIMUM UPTIME

A reliable, time-proven design and unmatched durability thanks to 60 years of innovation. P. 10



► POWER AND EFFICIENCY

Easy operation thanks to high torque engines with smooth controls even at full power. P. 7

PERFORMANCE



► HIGH PERFORMANCE, SMALL SIZE

M-Series loaders feature outstanding performance while remaining agile and easy to transport. It's not the size, after all. It's how many ways you can use it. With a rated operating capacity up to 1 227 kg, you are well equipped for the most demanding jobs.

► HIGH-FLOW FOR ADVANCED ATTACHMENTS

Every Bobcat machine is designed as an attachment carrier. High-flow takes that versatility even further, enabling operators to replace several units of dedicated equipment with just one machine.



► RADIAL LIFT PATTERN

A cost-effective option, ideal for ground-level attachments with basic lift capability for everyday jobs.



► VERTICAL LIFT PATTERN

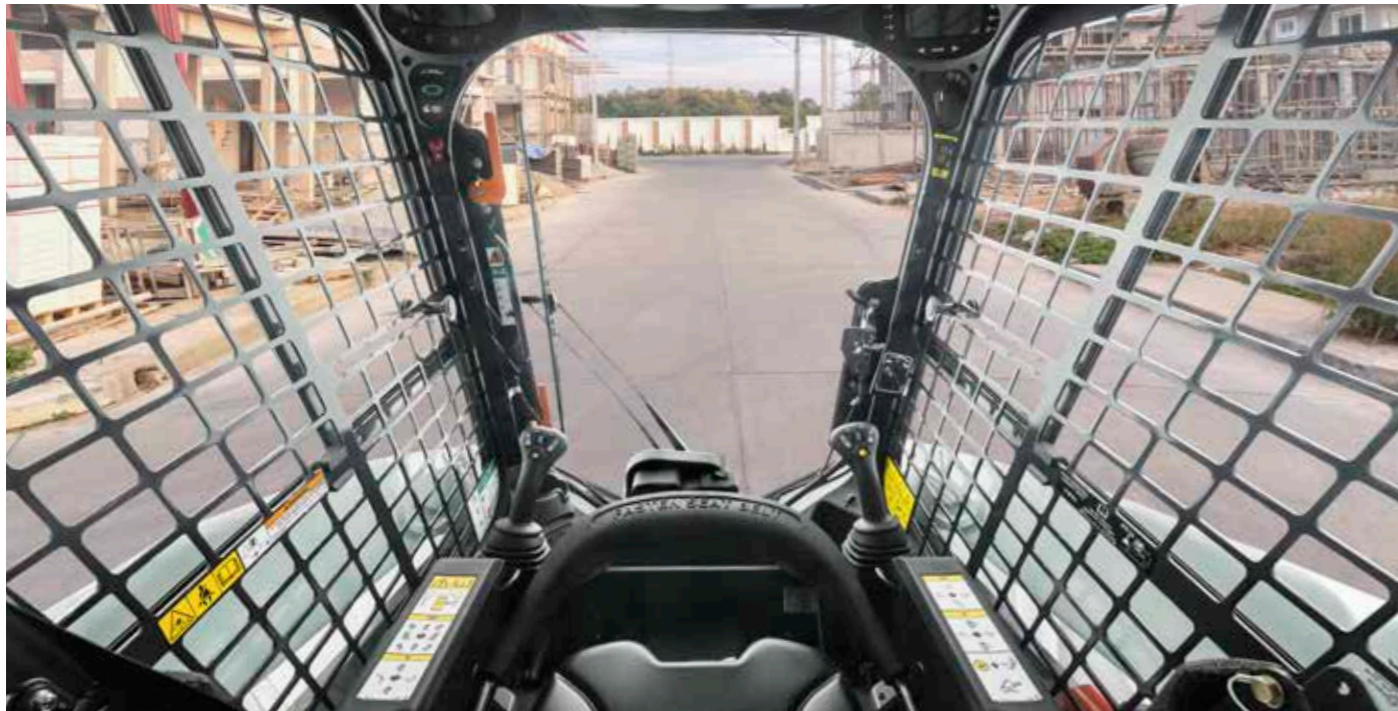
Higher lift, increased forward reach at maximum height, and greater lift capacity for demanding applications and environments.

STEP INSIDE



► PRESSURIZED CAB

With an optional pressurized cab, the dust and dirt are kept out and away from the operator. With storage space and a 12V charger, this easy-to-clean cab is built to make tough jobs comfortable.



► IN ALL WEATHER CONDITIONS



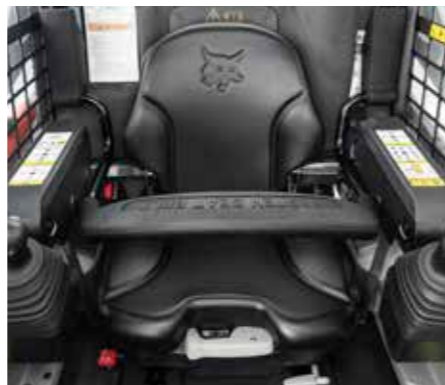
Stay comfortable and focused on the job all year round with direct cab temperature control.

► DELUXE DASHBOARD



Intuitive control panel and keyless ignition for increased convenience and security.

► PERFECT SEAT



Stay comfortable all day with ergonomic, easily adjustable seats with suspension options.

BUILT TO LAST

▶ IMPROVED UPTIME

Bobcat loaders rely on a range of features that help minimize maintenance and protect your machine: self-diagnostics, machine shutdown protection, battery run-down protection, cold weather protection, and many others. What's more, M-Series skid steer loaders feature the industry's only maintenance-free chain case, which further reduces maintenance and gives you added peace of mind.

▶ LEGACY OF INNOVATION

Operators stake their reputations on the durability and reliability of our equipment. Bobcat machines have proven themselves to stand the test of time on job sites all over the world. But Bobcat Company never stops innovating. Each generation is stronger, faster and more durable than the last.



Bobcat
MACHINE IQ

WIRELESS COMMUNICATIONS

▶ MACHINE IQ

BOBCAT® Machine IQ Wireless Communications enhances the support of your Bobcat machine.

- Durable built-in monitoring electronics
- Data is available to our machine monitoring specialist
- Maintenance is optimized for your business
- Data-driven services maximize uptime

THERE'S NO TIME FOR DOWNTIME. STAND UP TO THE HARSHTEST CONDITIONS, DAY AFTER DAY.

▶ STANDARD WARRANTY

Bobcat Company develops every machine to the highest standards of quality and durability. That's why our standard warranty provides 24 months or 2 000 operating hours (whichever occurs first) of coverage.



▶ PROTECTION PLUS EXTENDED WARRANTY

Enjoy peace of mind with Protection Plus extended warranty – providing the same level of protection as the standard warranty for up to 5 years. Choose the level of protection you need: powertrain, powertrain + hydraulics, or full coverage.



▶ BOBCARE

A long-running machine starts with proper planned maintenance. And it helps protect against repair costs and unplanned failures when you count on your machine to work.

- Avoid risk by preventing major repairs and complete failures.
- Accomplish more by reducing downtime and increasing your productivity and profitability.



THE RIGHT TOOL FOR THE JOB

▶ BOBCAT EQUIPMENT ADAPTS TO YOUR JOB

From urban areas to beaches, and from material handling to forestry, the lineup of Bobcat machines allows you to select the most suitable equipment for the unique jobs you do. Every machine is packed with features that give operators the power to do more, and do it faster.



CHOOSE YOUR ANIMAL



▶ S450

Power @ RPM (ISO 14396)	36.5 kW @ 2 600
Tipping load (ISO 14397-1)	1 215 kg
Operating weight	2 436 kg
Lift arm path	radial



▶ S510

Power @ RPM (ISO 14396)	41 kW @ 2 600
Tipping load (ISO 14397-1)	1 703 kg
Operating weight	2 816 kg
Lift arm path	radial



▶ S530

Power @ RPM (ISO 14396)	41 kW @ 2 600
Tipping load (ISO 14397-1)	1 823 kg
Operating weight	2 952 kg
Lift arm path	vertical



▶ S550

Power @ RPM (ISO 14396)	50.7 kW @ 2 600
Tipping load (ISO 14397-1)	1 852 kg
Operating weight	2 995 kg
Lift arm path	radial



▶ S590

Power @ RPM (ISO 14396)	50.7 kW @ 2 600
Tipping load (ISO 14397-1)	1 958 kg
Operating weight	3 127 kg
Lift arm path	vertical



▶ S630

Power @ RPM (ISO 14396)	55.3 kW @ 2 600
Tipping load (ISO 14397-1)	2 023 kg
Operating weight	3 553 kg
Lift arm path	radial



▶ S650

Power @ RPM (ISO 14396)	55.3 kW @ 2 600
Tipping load (ISO 14397-1)	2 455 kg
Operating weight	3 778 kg
Lift arm path	vertical

* Rated operating capacity is 50% of the tipping load.

STANDARD EQUIPMENT & OPTIONS

	S450	S510	S530	S550	S590	S630	S650
PERFORMANCE							
14-pin attachment control kit	•	•	•	•	•	•	•
2 Speed	• SJC	•	•	✓	✓	•	•
7-pin attachment control	•	•	•	✓	✓	•	•
Automatic reversing fan	•	•	•	•	•	•	•
Automatic ride control	•	•	•	•	•	•	•
Auxiliary hydraulics: variable flow/ maximum flow	✓	✓	✓	✓	✓	✓	✓
Bob-Tach™ frame	✓	✓	✓	✓	✓	✓	✓
Bobcat Interlock Control System (BICS)	✓	✓	✓	✓	✓	✓	✓
Bucket positioning	•	✓	✓	✓	✓	•	•
Cushioned lift and tilt cylinders	✓	✓	✓	✓	✓	✓	✓
Electrically activated proportional front auxiliary hydraulics	✓	✓	✓	✓	✓	✓	✓
Engine block heater kit	•	•	•	•	•	•	•
Engine compartment seal	–	•	•	•	•	•	•
Engine/hydraulics system shutdown	✓	✓	✓	✓	✓	✓	✓
Front axle counterweight	•	•	•	•	•	•	•
High-flow auxiliary hydraulics	–	•	•	✓	✓	•	•
Hydraulic bucket positioning (including ON/OFF switch)	•	✓	✓	✓	✓	•	•
Lift arm support	✓	✓	✓	✓	✓	✓	✓
Power Bob-Tach™	•	•	•	•	•	•	•
Rear auxiliary hydraulic	•	•	•	•	•	•	•
Rear counterweight	–	•	•	•	•	•	•
Spark arrester	✓	✓	✓	✓	✓	✓	✓
TIRES & TRAVEL							
10 × 16.5, 10-ply, Heavy duty tires	✓	✓	✓	•	•	–	–
10 × 16.5, 10-ply, Versatile duty tires	•	•	•	✓	✓	–	–
12 × 16.5, Versatile duty tires	–	–	–	–	–	✓	✓
Heavy duty offset tires	–	•	•	•	•	•	•
Industrial flex tires	•	•	•	•	•	•	•
Severe duty tires	•	•	•	•	•	•	•
Solid flex tires	•	•	•	•	•	•	•
Super float tires	–	•	•	•	•	•	•
LIGHTS & BEACON							
Beacon	•	•	•	•	•	•	•
Headlight guard	•	•	•	•	•	•	•
LED side lights	•	•	•	•	•	•	•
Operating lights, front and rear	✓	✓	✓	✓	✓	✓	✓
Strobe	•	•	•	•	•	•	•
Tail light guard	•	•	•	•	•	•	•
Seat belt	✓	✓	✓	✓	✓	✓	✓
Special applications front door	•	•	•	•	•	•	•

	S450	S510	S530	S550	S590	S630	S650
CAB							
Deluxe enclosed cab* with heating	•	•	•	•	•	•	•
Deluxe enclosed cab* with HVAC	•	•	•	•	•	•	•
Deluxe instrument panel	✓	✓	✓	✓	✓	✓	✓
Deluxe operator cab*	✓	✓	✓	✓	✓	✓	✓
FOPS II	•	•	•	•	•	•	•
Front door kit	•	•	•	•	•	•	•
Manual controls	✓	✓	✓	–	–	✓	✓
Selectable Joystick Controls (SJC – R/C Ready)	• 2 Sp.	•	•	✓	✓	•	•
Keyless start with password capability	✓	✓	✓	✓	✓	✓	✓
Noise reduction kit	✓	✓	✓	✓	✓	✓	✓
Radio	•	•	•	•	•	•	•
Rear-view camera with display	•	•	•	•	•	•	•
Rear window wiper	•	•	•	•	•	•	•
Seat bar	✓	✓	✓	✓	✓	✓	✓
Seat belt	✓	✓	✓	✓	✓	✓	✓
Special applications front door	•	•	•	•	•	•	•
Suspension cloth seat	•	•	•	•	•	•	•
Suspension vinyl seat	✓	✓	✓	✓	✓	✓	✓
MISCELLANEOUS							
Backup alarm	•	•	•	•	•	•	•
CE certification	✓	✓	✓	✓	✓	✓	✓
Custom paint color	•	•	•	•	•	•	•
Four-point lift	•	•	•	•	•	•	•
Fuel cap locking kit	•	•	•	•	•	•	•
Machine IQ (telematics)	✓	✓	✓	✓	✓	✓	✓
Operating manual	✓	✓	✓	✓	✓	✓	✓
Parking brake	✓	✓	✓	✓	✓	✓	✓
Road option	•	•	•	•	•	•	•
Single-point lift	•	•	•	•	•	•	•
Water tank	•	•	•	•	•	•	•

*Roll Over Protective Structure (ROPS) – meets requirements of SAE-J1040 and ISO 3471; Falling Object Protective Structure (FOPS) – meets requirements of SAE-J1043 and ISO 3449, Level I

• = option ✓ = standard – = not available or not compatible

PERSONALIZE YOUR MACHINE

Sometimes, we all want to add a specific functionality or a personal touch to the machine. Choose from a list of comprehensive options and customize your loader to your heart's content!



Beacon

Counterweight kit

Cloth suspension seat

Forestry kit

High-flow auxiliary hydraulics

HVAC



LED lights

Radio

Rear-view camera

Road kit

Selectable joystick controls

Severe duty tires



Heavy-duty tires

MULTI-TOOL CARRIER

BOBCAT ATTACHMENTS

Get more versatility and efficiency with Bobcat® attachments and implements.

- The largest choice of attachments in the industry.
- Match performance to your Bobcat machine.
- Work harder with stronger components and construction.
- Rest easy with the 12-month warranty on every genuine Bobcat attachment.

Actual attachment compatibility may vary based on different machine configurations. Contact your dealer for actual attachment compatibility.



Angle brooms



Box blades



Breakers



Brush saws



Combination buckets



Concrete mixers



Drop hammers



Grapples, industrial



Landplanes



Augers



Landscape rakes



Laser graders



Pallet forks, hydraulic



Root grapples



Backhoes



Tillers



Snow blades



Tree transplanters



Stump grinders



Scrapers

MULTI-TOOL CARRIER

TOP SELECTION OF ATTACHMENTS					
	S450	S510	S530	S550 S590	S630 S650
Angle brooms	•	•	•	•	•
Augers	•	•	•	•	•
Backhoes	•	•	•	•	•
Bale forks	•	•	•	•	•
Box blades	–	•	•	•	•
Breakers	•	•	•	•	•
Brush saws	•	•	•	•	•
Brushcat™ rotary cutters	•	•	•	•	•
Combination buckets	•	•	•	•	•
Concrete mixers	•	•	•	•	•
Concrete pumps	–	–	–	•	–
Construction / industrial buckets	•	•	•	•	•
Diggers	•	•	•	•	•
Dozer blades	•	•	•	•	•
Drop hammers	–	•	•	•	•
Fertilizer and grain buckets	•	•	•	•	•
Flail cutters	•	•	•	•	•
Graders	•	•	•	•	•
Industrial grapples	•	•	•	•	•
Landplanes	•	•	•	•	•
Landscape rakes	•	•	•	•	•
Laser equipment	•	•	•	•	•
Low profile buckets	•	•	•	•	•
Mixing buckets	–	•	•	•	•
Mowers	•	•	•	•	•
Pallet forks	•	•	•	•	•
Planers	–	–	•	•	•
Root grapples	•	•	•	•	•
Scarifiers	•	•	•	•	•
Scrapers	•	•	•	•	•
Skeleton buckets	•	•	•	•	•
Snow & light material buckets	•	•	•	•	•
Snow pushers	•	•	•	•	•
Snow v-blades	•	•	•	•	•
Soil conditioners	•	•	•	•	•
Spreaders	•	•	•	•	•
Stump grinders	–	•	•	•	•
Sweepers	•	•	•	•	•
Tillers	•	•	•	•	•
Tree transplanters	–	•	•	•	•
Trench compactors	–	•	•	•	•
Trenchers	–	–	•	•	•
Utility forks	•	•	•	•	•
Wheel saws	–	–	•	•	•
Whisker brooms	•	•	•	•	•
Wood chippers	•	•	•	•	•

SPECIFICATIONS

SPECIFICATIONS							
	S450	S510	S530	S550	S590	S630	S650
MACHINE RATING							
Tipping load (ISO 14397-1)	1 308 kg	1 703 kg	1 823 kg	1 852 kg	1 958 kg	2 023 kg	2 455 kg
Rated operating capacity (ISO 14397-1)	654 kg	851 kg	911 kg	926 kg	979 kg	1 012 kg	1 227 kg
Pump capacity std flow (at pump RPM)	63.2 l/min		64.7 l/min			87.1 l/min	
Pump capacity high-flow (at pump RPM)	–		101.1 l/min			115.5 l/min	
System relief at quick couplers	22.4 – 23.1 MPa			23.8 – 24.5 MPa			
Travel speed	11.4 km/h		11.8 km/h			11.4 km/h	9.9 km/h
Travel speed (high – option*)	14.8 km/h		17.3 km/h			19.1 km/h	18.4 km/h
Lift arm path	radial		vertical	radial	vertical	radial	vertical
DIMENSIONS							
Length with standard bucket	3 172 mm		3 378 mm			3 474 mm	
Width over standard bucket	1 575 mm		1 727 mm			1 880 mm	
Height with operator cab	1 976 mm		1 972 mm			2 065 mm	
Height to bucket hinge pin	2 781 mm	2 908 mm	3 023 mm	2 908 mm	3 023 mm	3 073 mm	3 149 mm
Wheelbase	900 mm		1 082 mm			1 150 mm	
ENGINE							
Make / Model	Bobcat 2.4 l, 97/68 EC Stage V						
Fuel	diesel						
Cooling	liquid						
Power at 2 600 RPM (ISO 14396)	36.5 kW	41 kW		50.7 kW		55.3 kW	
Torque at 1 800 RPM (ISO 14396)	182.2 Nm	204 Nm		252 Nm		283.9 Nm	
Number of cylinders	4						
Displacement	2 393 cm ³			2 392 cm ³			
Fuel tank capacity	53.8 l		93.7 l			90.5 l	
WEIGHTS							
Operating weight**	2 436 kg	2 816 kg	2 952 kg	2 995 kg	3 127 kg	3 553 kg	3 778 kg
Shipping weight	2 221 kg	2 431 kg	2 581 kg	2 612 kg	2 751 kg		3 378 kg
ENVIRONMENTAL							
Operator LpA (98/37 & 474-1)			86 dB(A)				83 dB(A)
Noise level LwA (EU Directive 2000/14/EC)		98 dB(A)			101 dB(A)		
Whole body vibration (ISO 2631-1) high speed	0.78 ms ⁻²		0.86 ms ⁻²		0.9 ms ⁻²		1.34 ms ⁻²
Whole body vibration uncertainty	0.39 ms ⁻²		0.43 ms ⁻²		0.4 ms ⁻²		0.54 ms ⁻²
Hand-arm vibration (ISO 5349-1) high speed	1.29 ms ⁻²		1.31 ms ⁻²		1.6 ms ⁻²		1.54 ms ⁻²
FORCES							
Lift breakout force	1 416 daN	1 978 daN	1 662 daN	1 978 daN	3 687 daN	3 459 daN	
Tilt breakout force	1 807 daN	2 080 daN	2 122 daN	2 080 daN	2 913 daN	2 999 daN	
Push force	1 866 daN	2 377 daN	–	2 377 daN	2 514 daN	3 072 daN	
CYCLE TIMES							
Raise lift arms	2.5 s			3.6 s			4.2 s
Lower lift arms	2 s	3.6 s	2.7 s		3.6 s	3.1 s	3 s
Bucket rollback	1.5 s	1.7 s	1.8 s		1.7 s	1.9 s	2.8 s
Bucket dump	1.8 s		2.5 s			2.4 s	2.9 s

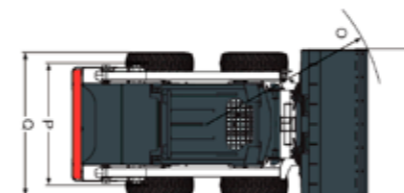
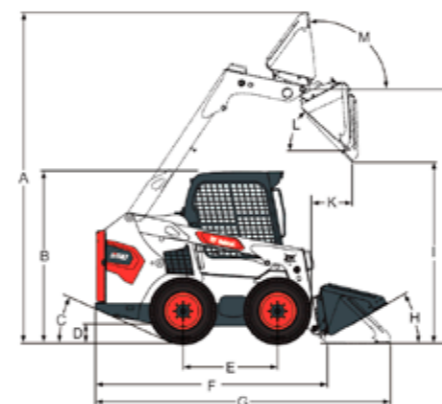
* High range standard on S550 & S590 - optional on other models

** Base machine with bucket, operator and full fuel tank

Certain specifications are based on engineering calculations and are not actual measurements. Specifications are provided for comparison purposes only and are subject to change without notice. Specifications for your individual Bobcat equipment will vary based on normal variations in design, manufacturing, operating conditions, and other factors. Pictures of Bobcat units may show other than standard equipment.

SPECIFICATIONS

DIMENSIONS



	S450	S510	S530	S550	S590	S630	S650
A Operating height	3 558	3 787	3 901	3 787	3 901	3 950	4 026
B Height with operator cab	1 976		1 972			2 065	
C Angle of departure	23°		24°			25°	
D Ground clearance	214		185		228	207	
E Wheelbase	900		1 082			1 150	
F Length without attachment	2 499		2 657			2 753	
G Length with standard bucket	3 172		3 378			3 474	
H Rollback at ground position	26°		30°			29.4°	
I Dump height with standard bucket	2 157	2 205	2 319	2 205	2 177	2 410	2 489
J Height to bucket hinge pin	2 781	2 908	3 023	2 908	3 023	3 073	3 149
K Dump reach at maximum height	587	467	828	467	818	599	851
L Dump angle at maximum height	40°	42°				37.8°	37.6°
M Rollback fully raised at maximum height	91°	97°				96.4°	96.6°
N Width over standard bucket	1 575		1 727			1 880	
N Width over standard bucket	–		1 575			–	1 575
N Width over standard bucket	–		1 880			–	1 880
O Turning radius with standard bucket	1 940	2 032	2 024	2 032		2 119	2 106
P Track, standard tires	–		1 374			1 507	
Q Width over standard tires	1 488		1 643			1 832	
Q' Width over offset tires	–		1 520			1 741	

*Machine width with Heavy-duty offset tires.
Unit: mm



FINANCING OPTIONS

24, 36, OR 48 MONTH FINANCING*

Take advantage of 24, 36 or 48 month financing programs starting from **0% interest** and improve your cashflow.

Ask your dealer for the financing offers available.

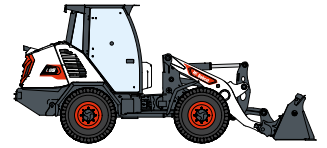
340 MACHINES / 150 ATTACHMENT FAMILIES / 1 TOUGH ANIMAL



**SKID-STEER
LOADERS**



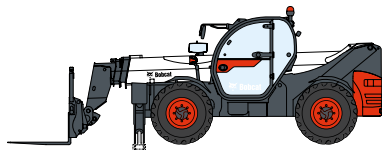
**COMPACT TRACK
LOADERS**



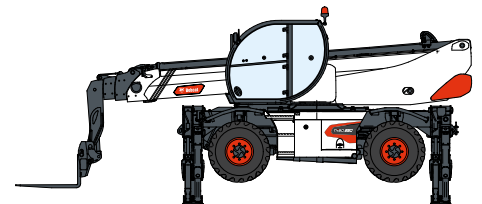
**COMPACT WHEEL
LOADERS**



FORKLIFTS



TELEHANDLERS



ROTARY TELEHANDLERS



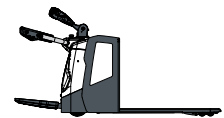
**LIGHT COMPACTION
EQUIPMENT**



**COMPACT
EXCAVATORS**



**COMPACT
TRACTORS**



**WAREHOUSE
EQUIPMENT**



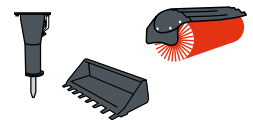
**MINI TRACK
LOADER**



MOWERS



**PORTABLE
POWER**



ATTACHMENTS

DOOSAN

Bobcat is a Doosan Company. Doosan is a global leader in construction equipment, power & water solutions, engines, and engineering proudly serving customers and communities for more than a century. | Bobcat and the Bobcat logo are registered trademarks of Bobcat Company in the United States and various other countries. ©2024 Bobcat Company. All Rights Reserved.

www.bobcat.com

©2024 BOBCAT B4502800-EN (03-24)



Bobcat®

*Financing options may vary by country and dealer. Always ask your dealer about currently available financing options. Terms and conditions may apply.

Doosan Bobcat EMEA, U Kodelky 1810, 263 12 Dobříš, Czech Republic